

»» PTS-4077F

High-performance Tile Array Directional Speaker with DAC™ (Defined Acoustic Coverage)

Directional Tile Array Speaker

The PTS-4077F is a high-performance focused tile-array active speaker. It consists of an array of high performance, full range drivers which offer a very well-defined dispersion pattern with no hot spots. It offers the best sound quality of any focused sound technology on the market. It has the greatest low-frequency capability of any directional speaker in the industry. The unique design of the PTS-4077F array offers excellent sound pattern control. The speaker offers excellent speech intelligibility as well as great musicality. The high-performance drivers provide crystal clear and engaging audio to the audience with a full-frequency response in the audible zone. The highly directional sound from the speaker creates a well-defined audio zone and eliminates sound bleeding into adjacent areas/zones. This compact tile-array speaker is designed to be installed as a stand-alone unit or can be paired with a variety of digital displays in retail, educational, industrial and commercial applications. It is retrofit friendly, quick and easy to install in standard commercial drop-tile ceilings. Cat5 plug-and-play operation reduces labor costs for installation.

The PTS-4077F is very easy to mount in the standard commercial drop-tile ceilings. With optional mounting brackets, it can also be suspended in open ceiling spaces. This high-performance directional speaker is well suited for hotel kiosks, restaurants, theme parks, museums, art galleries, collaborative learning spaces or department store digital signage for an audience of a few in a very controlled sound dispersion zone.

The speaker is part of the PADS™ family and easily integrates with other PADS™ components. In areas with highly varying ambient noise, it can be used with the PALS™ (Pragmatic Audio Leveling System) for automatic volume control based on the ambient noise.

Feature & Benefits:

- Innovative design, highly focused sound
- Quick and easy to install, retrofit friendly
- High efficiency, full-range drivers
- Great low frequency response
- Excellent speech intelligibility
- Energy efficient internal audio amplifier
- Cat5 cable simple plug-and-play operation
- Reduces installation labor costs
- CE compliant
- Standard drop-tile 2' x 2' (600mm x 600 mm)

Specifications:

Frequency Response: 200Hz - 10kHz

Sensitivity: > 96dB @ 1W/1m

Dimensions (HxWxD): 24" x 24" x 3"

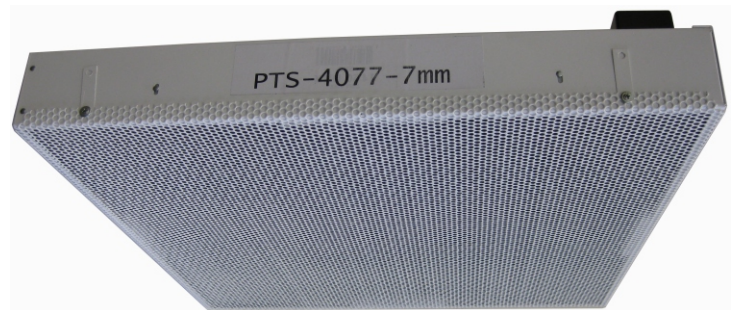
Weight: 12 lbs.

Finish: White, (Black, Silver, etc. custom)

Grille: perforated aluminum

Applications:

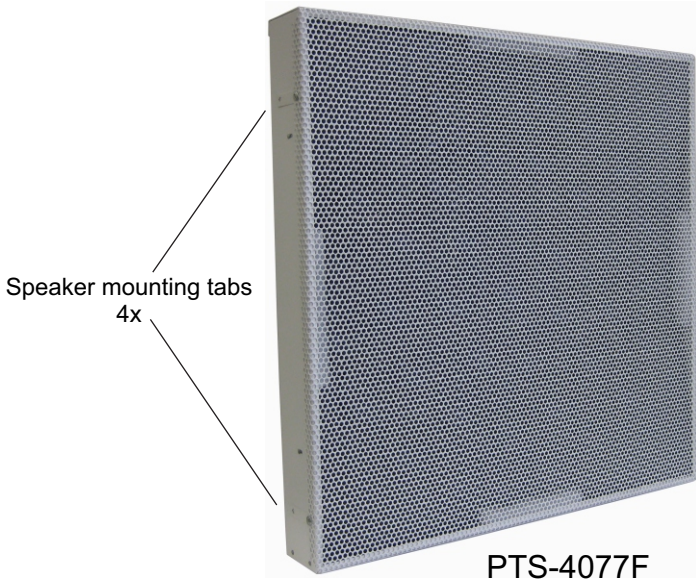
- Digital signage directional speakers
- Museums, exhibits, displays, libraries
- HealthCare waiting areas, POP displays
- Collaborative educational spaces
- Applications in hotels, fitness clubs, restaurants, theme parks, shopping malls, grocery stores, retail, entertainment, etc.



*US and International patents pending

TO PLACE an ORDER or for QUESTIONS,
Emails Us: sales@pragmatic1.com, Call Us: (408) 748-1100 or Fax Us: (408) 663-9783

System components of PTS-4077F and connections diagrams

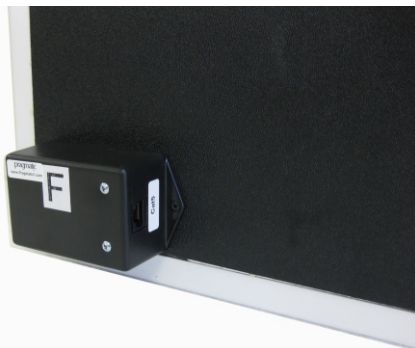


PH-1AA

(PADS™ 1-port hub and power supply included with PTS-4077F package)

Optional component

Rear connection view for PTS-4077F



PALS™

Pragmatic ambient noise-sensing Automatic Audio Leveling System with 4 microphone input hub

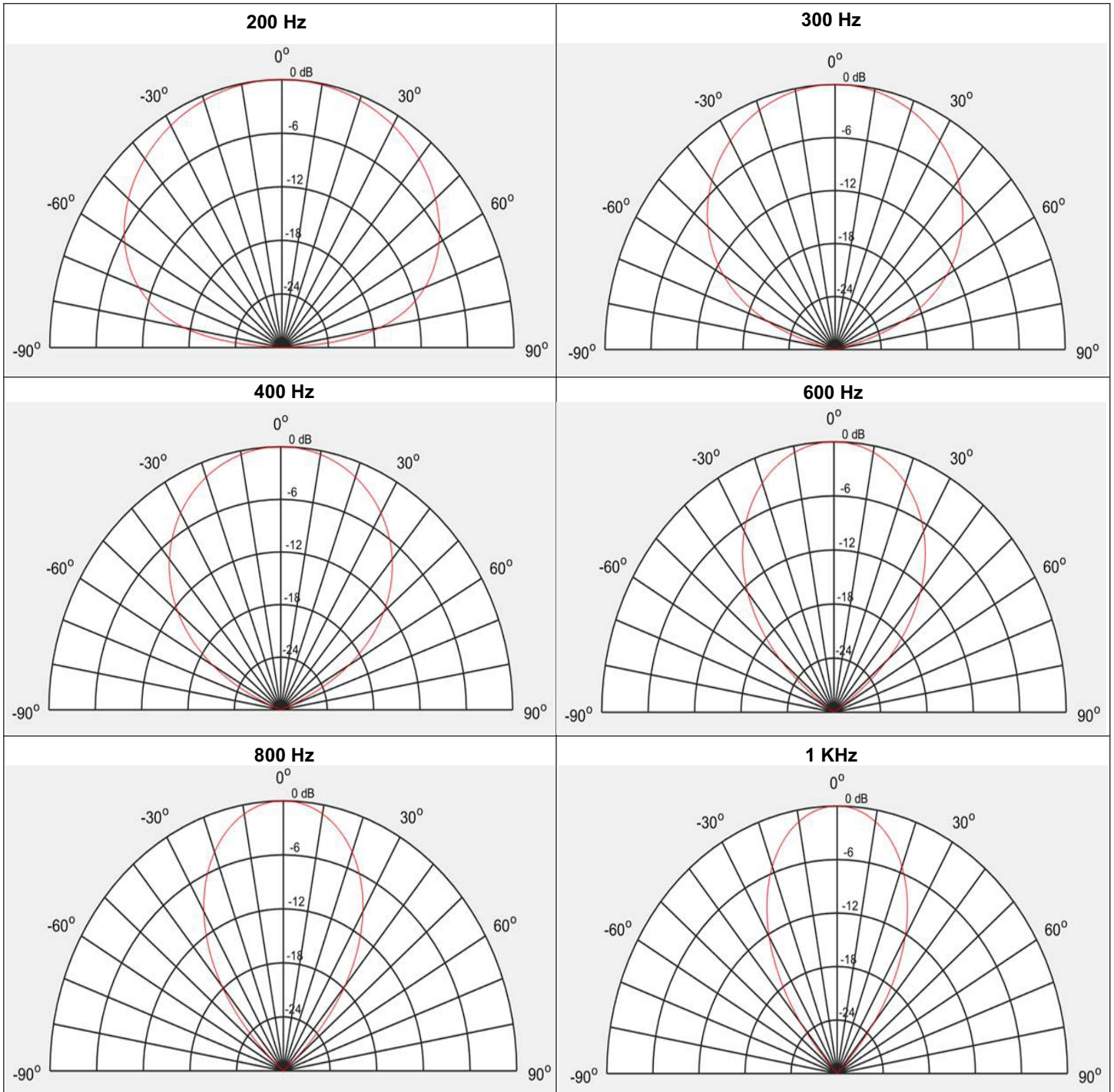
Typical Connections Diagram:

Cat5 cable length 300 ft. max. between PTS-4077F and PH-1AA hub



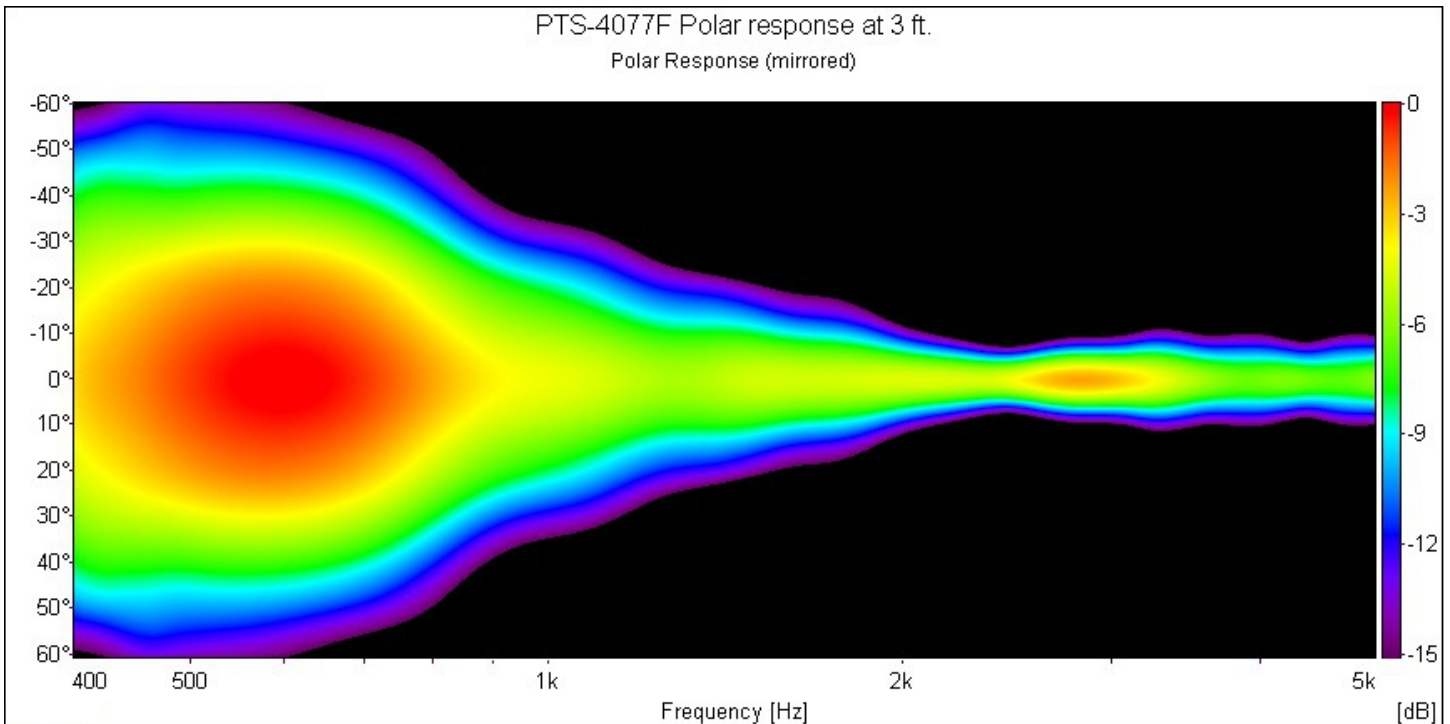
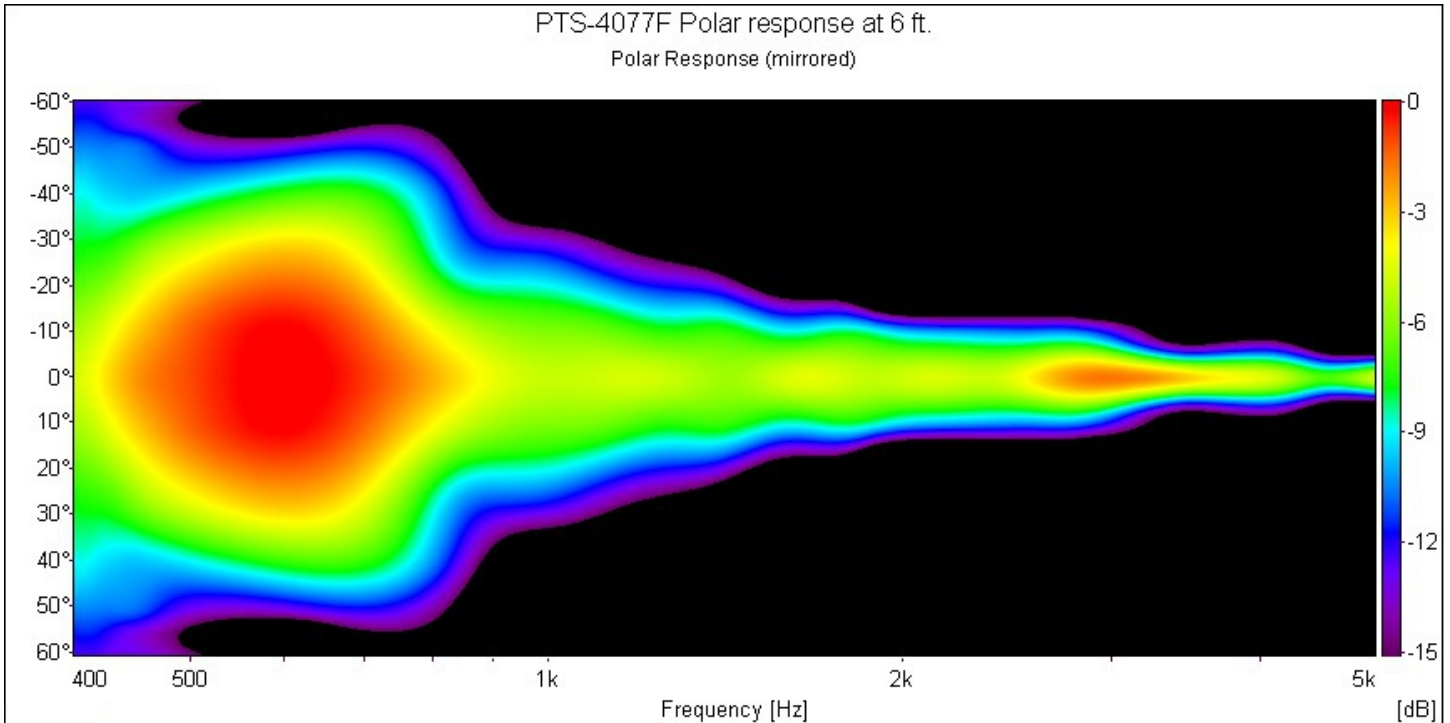
TO PLACE an ORDER or for QUESTIONS,
Emails Us: sales@pragmatic1.com, Call Us: (408) 748-1100 or Fax Us: (408) 663-9783

Sound dispersion polar plots of PTS-4077F speaker at various frequencies



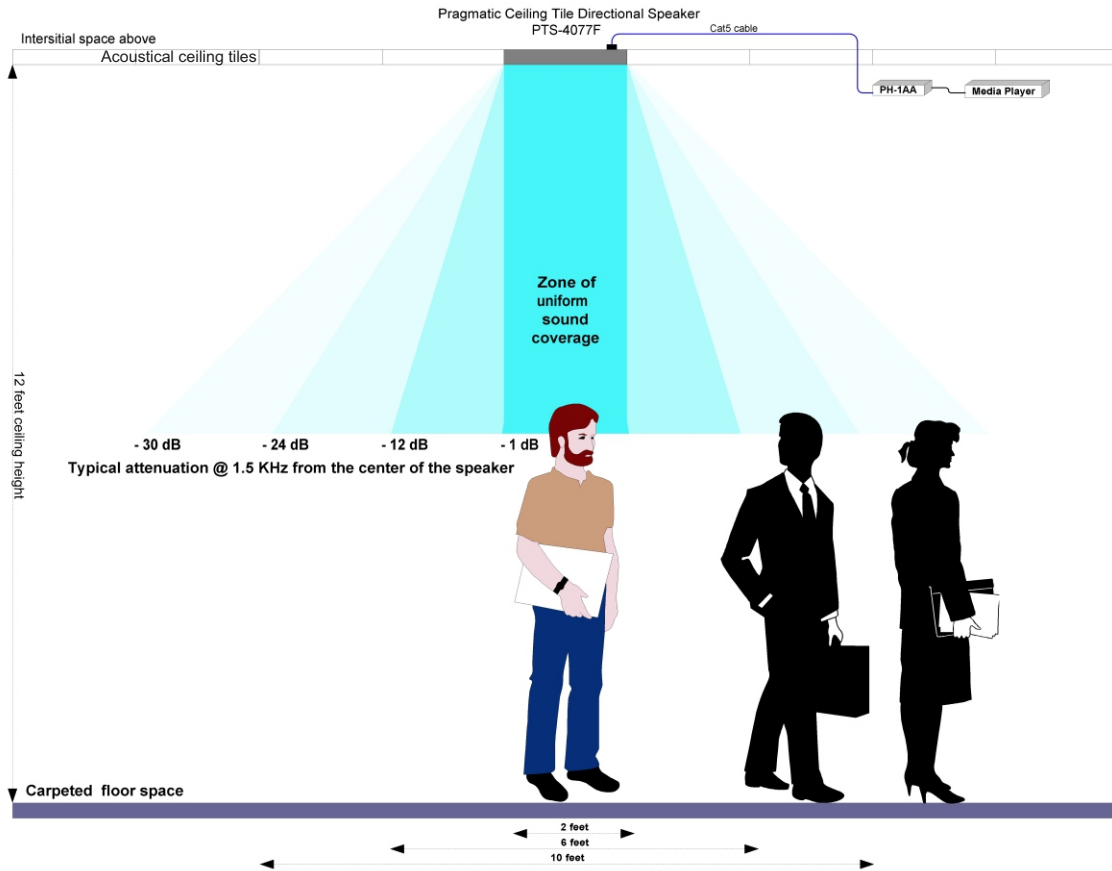
TO PLACE an ORDER or for QUESTIONS,
Emails Us: sales@pragmatic1.com, Call Us: (408) 748-1100 or Fax Us: (408) 663-9783

Sound dispersion actual measured polar response of PTS-4077F speaker

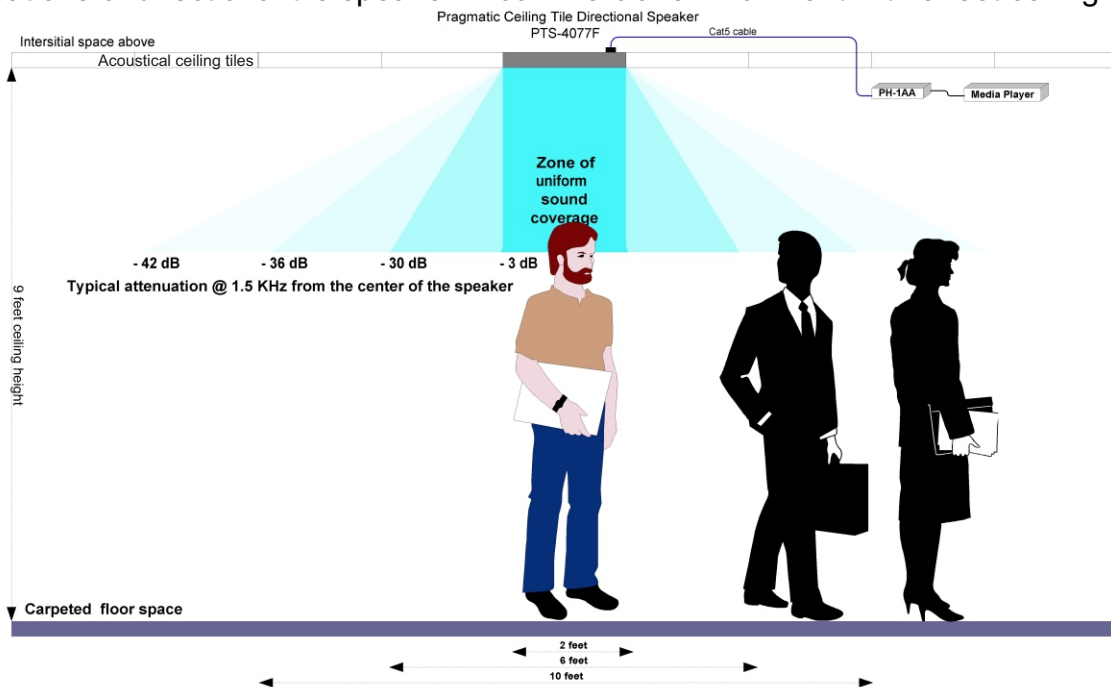


TO PLACE an ORDER or for QUESTIONS,
Emails Us: sales@pragmatic1.com, Call Us: (408) 748-1100 or Fax Us: (408) 663-9783

Applications of directional tile speaker in commercial environment with 12 feet ceiling height



Applications of directional tile speaker in commercial environment with 9 feet ceiling height



TO PLACE an ORDER or for QUESTIONS,
Emails Us: sales@pragmatic1.com, Call Us: (408) 748-1100 or Fax Us: (408) 663-9783

Applications of PTS-4077F directional speaker in digital signage at airport terminal



Applications of PTS-4077F directional speakers in collaborative learning spaces



TO PLACE an ORDER or for QUESTIONS,
Emails Us: sales@pragmatic1.com, Call Us: (408) 748-1100 or Fax Us: (408) 663-9783